

### SECTION AA

#### NOTE:

AUX. EARTHMAT SHALL BE SO POSITIONED THAT THE FOOT OF THE OPERATOR ALWAYS LIE OVER THE AUX. EARTHMAT AREA WHILE ATTENDING / OPERATING THE MECH. BOX. THE CABLE TRENCH ROUTING SHALL BE PLANNED ACCORDINGLY.



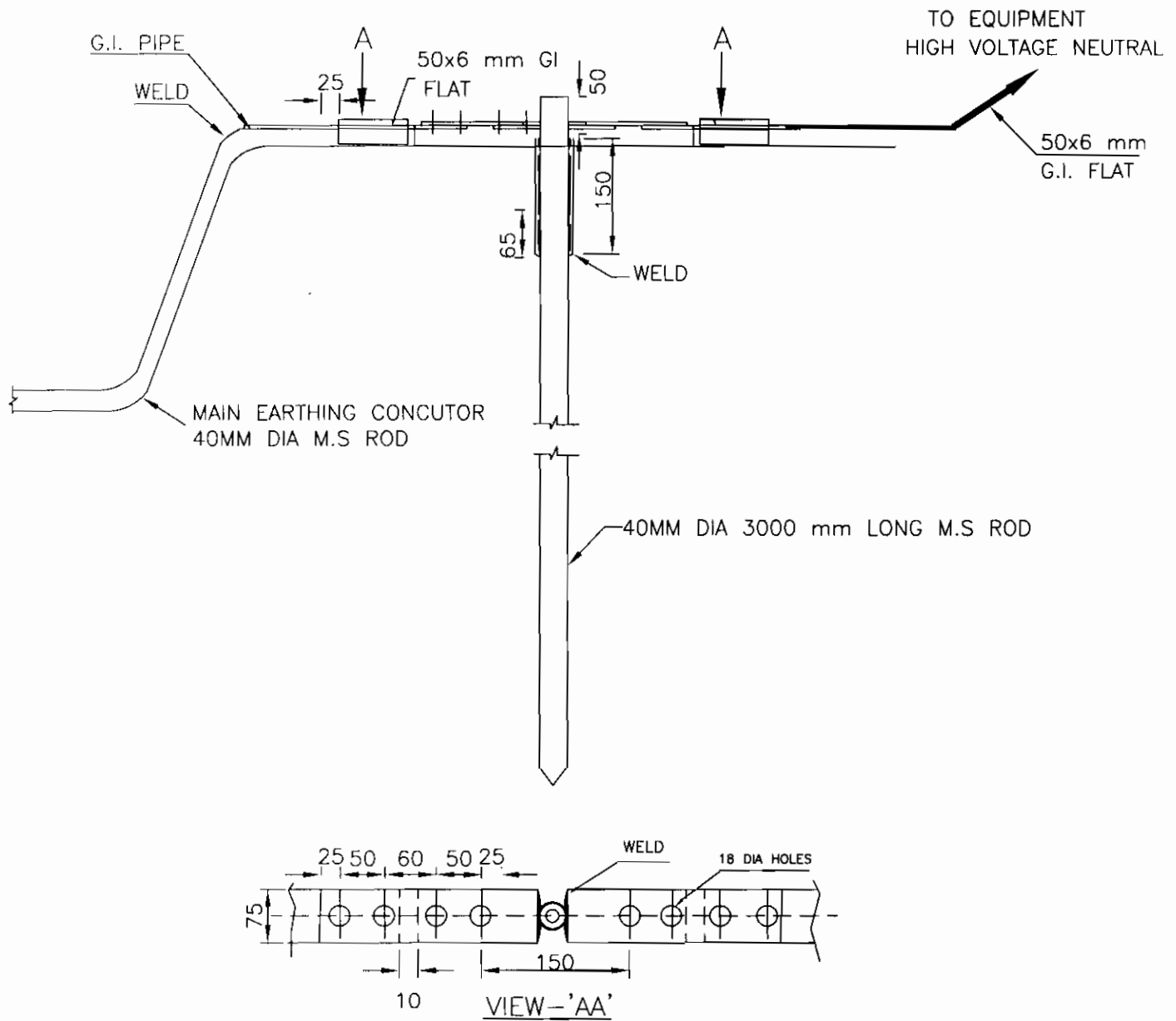
## EQUIPMENT & STRUCTURE EARTHING DETAILS

### AUXILIARY EARTHMAT FOR ISOLATOR MAIN MECH., E/S MECH. BOX & CB (TYP.)

COMPU. DRG. REF.

Report No.

TB-STD-316-AUX. MAT



# EQUIPMENT & STRUCTURE EARTHING DETAILS ROD EARTH ELECTRODE WITHOUT TEST PIT

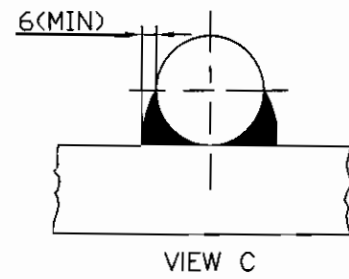
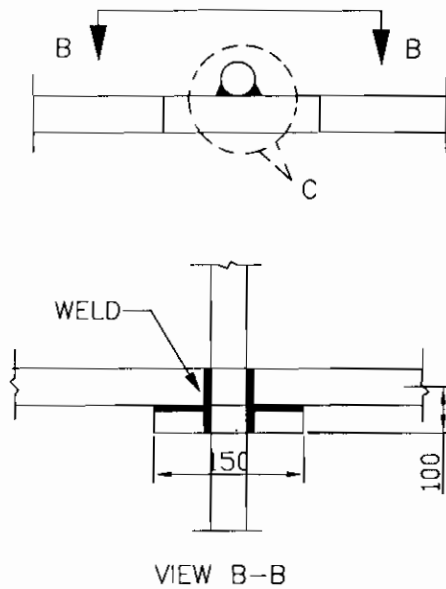
COMPU. DRG. REF.

DRG. No.

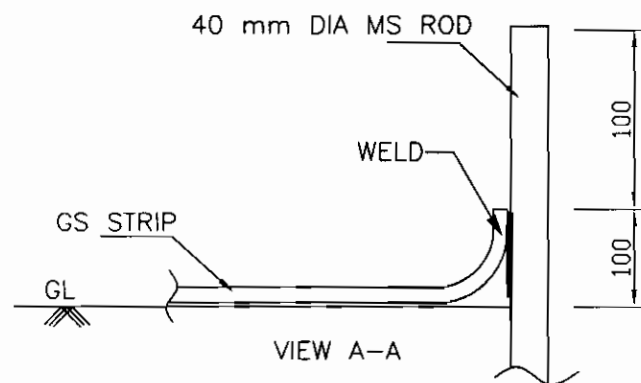
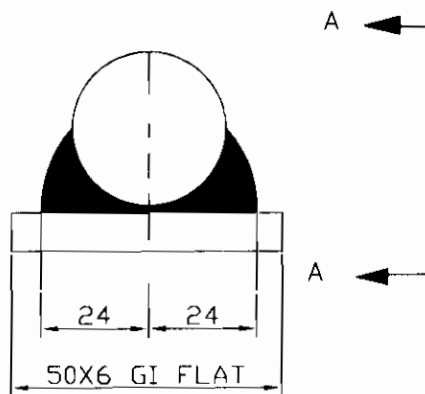
TB-STD-316-ROD ELECTRODE

REV. 00

## 2. RIGHT ANGLED JOINT



## 3. ROD TO STRIP



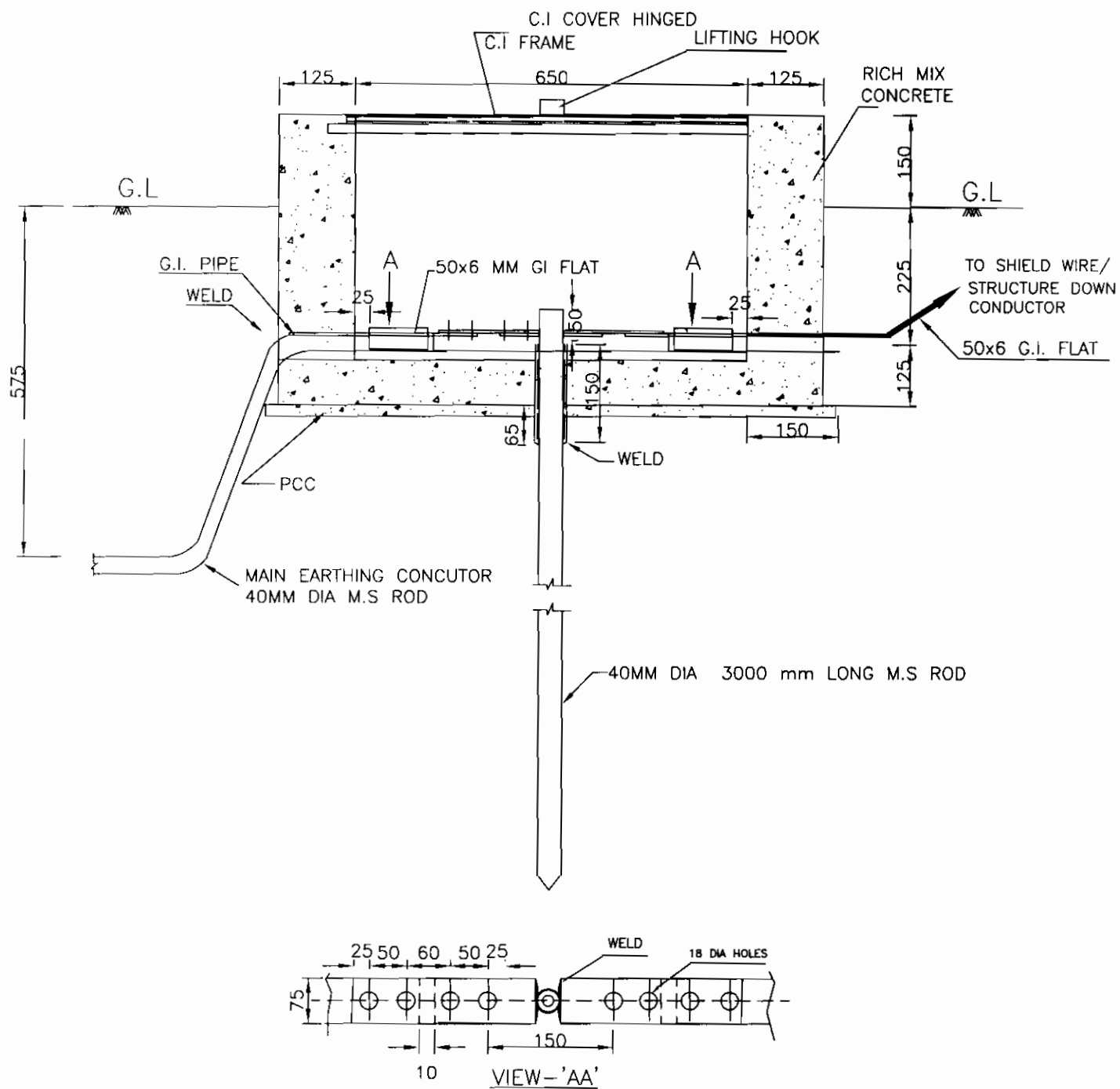
## EQUIPMENT & STRUCTURE EARTHING DETAILS WELDING DETAILS - II

COMPUTER REF. NO.

DRG. No.

TB-STD-316-ROD WELDING

REV. 00



# EQUIPMENT & STRUCTURE EARTHING DETAILS ROD EARTH ELECTRODE WITH TEST PIT

COMPU. DRG. REF.

DRG. No.

TB-STD-316-ROD ELECTRODE

REV. 00